

# THE INTERNATIONAL BACCALAUREATE (IB) MIDDLE YEARS PROGRAMME (MYP)

THE INTERNATIONAL BACCALAUREATE (IB) MIDDLE YEARS PROGRAMME (MYP) IS AN INTERNATIONAL BASIC EDUCATION PROGRAM FOR STUDENTS AGED 11-16. IT IS A PROGRAM THAT HELPS DEVELOP CREATIVE, CRITICAL AND RESPONSIBLE THINKING YOUNG PEOPLE, FOCUSES ON APPLYING KNOWLEDGE IN REAL-LIFE SITUATIONS, AND ENCOURAGES THEM TO BECOME ACTIVE, EMPATHETIC, LIFELONG LEARNING CITIZENS.

ŠIAULIAI DIDŽDVARIS GYMNASIUM IS A GENERAL EDUCATION INSTITUTION THAT IMPLEMENTS THE SECOND STAGE OF BASIC EDUCATION, UPPER SECONDARY EDUCATION, NON-FORMAL EDUCATION PROGRAMMES, AND THE INTERNATIONAL BACCALAUREATE DIPLOMA PROGRAMME, PROVIDES OPPORTUNITIES FOR LIFELONG LEARNING, SUPPORTS THE COMPREHENSIVE DEVELOPMENT OF STUDENTS' PERSONALITIES, ENHANCES THEIR SOCIAL SKILLS, AND FOSTERS MULTICULTURAL COLLABORATION.

ŠIAULIAI DIDŽDVARIS GYMNASIUM, WHICH SUCCESSFULLY IMPLEMENTS THE INTERNATIONAL BACCALAUREATE DIPLOMA PROGRAMME (IB DP), IS ACCREDITED TO IMPLEMENT THE IB MYP IN 2026.

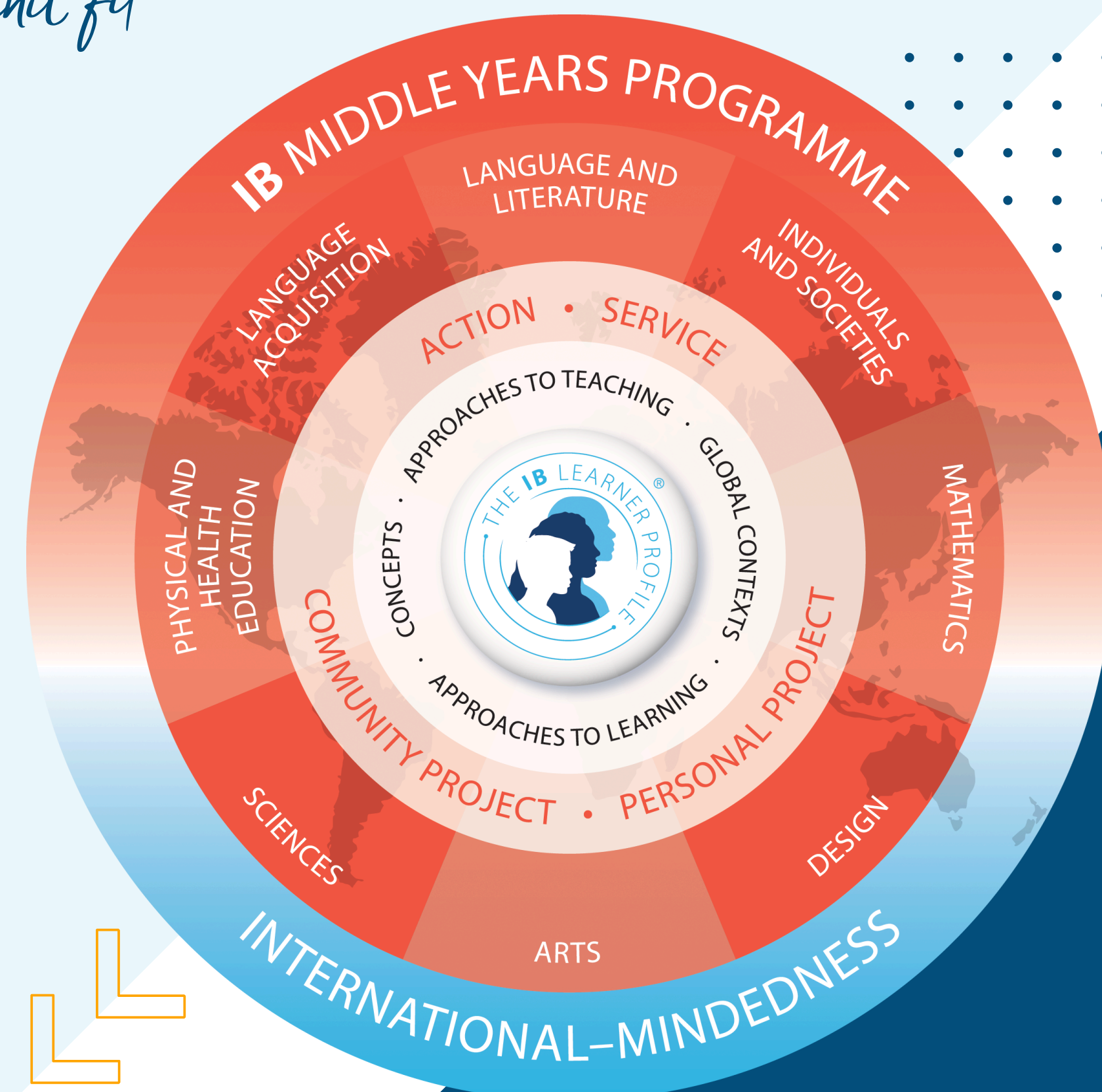


DIDŽDVARIO  
GIMNAZIJA

## PRINCIPLES OF IB EDUCATION

- **HOLISTIC EDUCATION**  
IB programs aim to develop a well-rounded personality, encompassing intellectual, social, emotional and physical needs.
- **CRITICAL THINKING**  
Students are encouraged to analyze information, ask questions and form their own opinions.
- **ACTIVE LEARNING**  
Programs promote active learning through discussions, projects, research and other activities, rather than passive absorption of knowledge.
- **MULTILINGUALISM AND INTERCULTURAL UNDERSTANDING**  
Programs encourage students to be interested in different cultures and languages, developing understanding and tolerance. Special attention is paid to learning the mother tongue.
- **RESPONSIBILITY AND ACTION**  
Students are encouraged to take responsibility for their own learning and to participate in community activities.
- **SUSTAINABILITY**  
Programs encourage students to understand the importance of environmental protection and sustainability.
- **CONTINUOUS ASSESSMENT**  
IB programs include a variety of assessment methods, including grades, feedback and student self-reflection, to monitor progress and provide support.

*Ex nihilo nihil fit*



# THE INTERNATIONAL BACCALAUREATE (IB) MIDDLE YEARS PROGRAMME (MYP)



DIDŽDVARIO  
GIMNAZIJA

*Ex nihilo nihil fit*

## COMPULSARY COMPONENTS OF IB MYP

### PERSONAL PROJECT

In the final year of the MYP, students undertake a significant independent project allowing them to pursue their own interests and demonstrate their learning.

### SERVICE AS ACTION (20 HOURS YEARLY)

It emphasizes students taking initiative to address needs within their community and make a positive impact. It's about students actively applying their learning to real-world situations and developing a sense of social responsibility. This involves planning, implementing, and reflecting on projects that benefit others and the environment.

### AN INTERDISCIPLINARY UNIT IN THE MYP (AT LEAST ONE EACH YEAR)

A collaborative learning experience where students draw on knowledge and skills from two or more subject areas to explore a common theme, problem, or concept. These units encourage students to make meaningful connections between disciplines, deepening their understanding of complex ideas while developing critical and creative thinking. Through inquiry-based learning, students synthesize different perspectives to address real-world issues, reflect on their learning, and express their understanding through integrated assessments.

## 8 SUBJECT GROUPS

- LANGUAGES AND LITERATURE (LITHUANIAN)
- FOREIGN LANGUAGES (GERMAN, FRENCH)
- SOCIAL STUDIES (HISTORY, GEOGRAPHY, ECONOMICS)
- NATURAL SCIENCES (NATURE AND MAN, BIOLOGY, CHEMISTRY, PHYSICS)
- MATHEMATICS
- ARTS (MUSIC, FINE ARTS)
- PHYSICAL AND HEALTH EDUCATION
- DESIGN (IT, TECHNOLOGY)

**THE IB PROGRAMME DEVELOPS NOT ONLY ACADEMIC SKILLS, BUT ALSO PERSONAL VALUES, SELF-CONFIDENCE, AND COMMUNITY SPIRIT.**

**THIS PROGRAM SHAPES PERSONALITY, DEVELOPS THE ABILITY TO THINK GLOBALLY, ACT LOCALLY, AND FEEL RESPONSIBLE NOT ONLY FOR ONE'S OWN FUTURE, BUT ALSO FOR THE WORLD'S.**



# THE INTERNATIONAL BACCALAUREATE (IB) MIDDLE YEARS PROGRAMME (MYP)

THE IB LEARNER PROFILE IS A SET OF 10 ATTRIBUTES THAT DEFINE THE KIND OF LEARNER THE INTERNATIONAL BACCALAUREATE (IB) AIMS TO DEVELOP.

## THE IB LEARNER PROFILE

- **INQUIRERS**  
Develop natural curiosity, Acquire the skills necessary to conduct inquiry and research. Enjoy learning and sustain this love of learning throughout life.
- **KNOWLEDGEABLE**  
Explore concepts, ideas, and issues across disciplines. Develop understanding in local and global contexts.
- **THINKERS**  
Apply critical and creative thinking skills to analyze and solve problems. Make reasoned, ethical decisions.
- **COMMUNICATORS**  
Express ideas and information confidently and creatively in more than one language. Work effectively and willingly in collaboration with others.
- **PRINCIPLED**  
Act with integrity and honesty. Have a strong sense of fairness and justice. Respect the dignity and rights of people everywhere. Take responsibility for their own actions.
- **OPEN-MINDED**  
Appreciate their own cultures and personal histories. Are open to the perspectives, values, and traditions of other individuals and communities. Are willing to grow from new experiences.
- **CARING**  
Show empathy, compassion, and respect. Have a commitment to service and making a positive difference in others' lives and the environment.
- **RISK-TAKERS (ALSO CALLED COURAGEOUS)**  
Approach uncertainty with forethought and determination. Work independently and cooperatively to explore new ideas. Are brave in defending their beliefs.
- **BALANCED**  
Understand the importance of intellectual, physical, and emotional balance. Aim for personal well-being for themselves and others.
- **REFLECTIVE**  
Give thoughtful consideration to their own learning and experience. Assess and understand their strengths and limitations to support their personal growth.



DIDŽDVARIO  
GIMNAZIJA

*Ex nihilo nihil fit*

